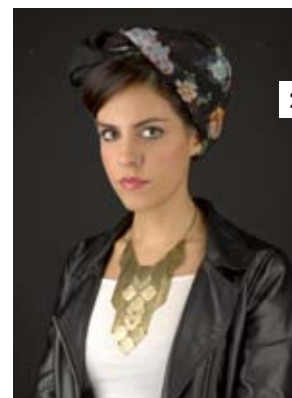




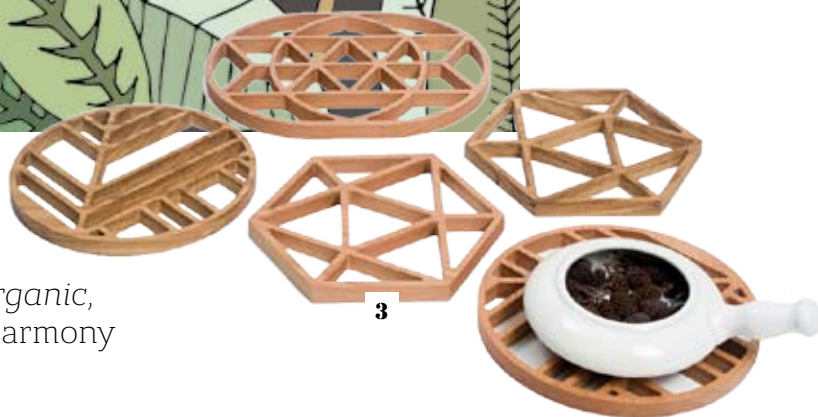
1. COCKATOO, ILLUSTRATION FOR WALLPAPER, PRODUCED BY **TEXTURAE**, 2016.
2. ELENA SALMISTRARO, 33, DESIGNER, ARTIST, ILLUSTRATOR.
3. ELEMENTI, GEOMETRIC AND SYMBOLIC WOODEN TRIVETS TO HANG ON THE WALL LIKE WORKS OF ART, PRODUCED BY **OFFISERIA**, 2016.



2

DREAM DESIGN

The language of *Elena Salmistraro* is poetic, organic, dreamy; starting from *nature* it seeks formal harmony based on lightness and delicate tones



3

4. MRND, TABLE LAMP IN PORCELAIN, GLASS, WOOD AND CORK, INSPIRED BY **GIORGIO MORANDI**, **SELETTI**, 2015.



4

Design is a part of her, living inside her, a continuous flux of thoughts and abilities, body and spirit, material and dreams. In Elena Salmistraro connected, bordering, at times separate, at times inextricably entwined worlds seem to converge: art and design, graphics and illustration, fashion and communication, the second and third dimensions, tattoos and baubles, dream visions and natural materials. Born in Milan in 1983, with a degree in Product Design from the Polytechnic in 2008, she founded Alko Studio one year later, with the architect Angelo Stoli. In 2010 she registered

her own fashion and design trademark, Alla's, and today she works mainly by using a site and logo that have her own name. She operates as a product designer, artist and illustrator for various companies, and collaborates with undoubtedly perceptive people: with the help of Massimo Lunardon she blows narrative and poetry into glass, with Alessandro Guerriero she sculpts the complex alchemy of body and brain, with the art direction of Serena Confalonieri she designs collections of wallpaper for Texturae that attempt to reconcile the world of adults with that of kids. In her work of

Looking AROUND

YOUNG DESIGNERS

1. LORICATO, CERAMIC CONTAINERS CREATED FOR THE EXHIBITION ANIMALITÀ CURATED BY SILVANA ANNICCHIARICO-TRIENNALE DESIGN MUSEUM, IN COLLABORATION WITH **BOSA**, 2015.

2. PENSIERO ALCHEMICO, CERAMIC STATUETTE, A TRIBUTE TO ALESSANDRO GUERRIERO, 2014.



3. VASES/BOWLS, ACCESSORIES FOR THE HOME MADE WITH WALLPAPER AND METAL SCREEN, **ROBERTO CAVALLI HOME**, 2015.

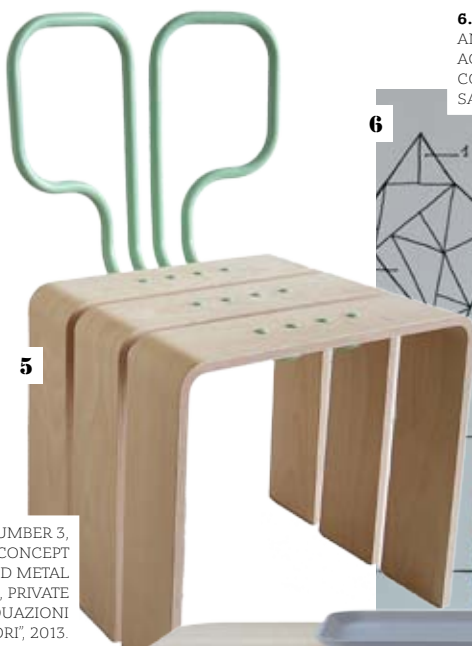
4. THE KAN DYNASTY... THE MAYA, COLLECTION OF OBJECTS FOR THE TABLE IN BOROSILICATE GLASS, PRODUCED BY **MASSIMO LUNARDON**, 2015.



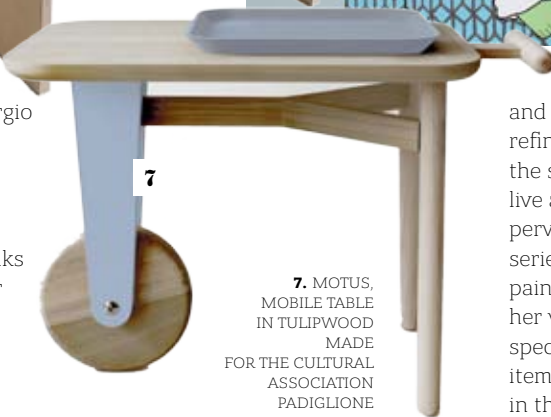
6. THE VISIONARY AND THE MINOTAUR, PAINTING, ACRYLIC ON CANVAS, PRIVATE COLLECTION OF ELENA SALMISTRARO, 2013.



5. PRIMITIVE NUMBER 3, SEATING CONCEPT IN WOOD AND METAL ROD, PRIVATE COLLECTION "EQUAZIONI PER SOGNATORI", 2013.



7. MOTUS, MOBILE TABLE IN TULIPWOOD MADE FOR THE CULTURAL ASSOCIATION PADIGLIONE ITALIA, 2014.



Seletti she evokes the bottles of Giorgio Morandi and uses glass, porcelain, wood and cork to transmute them into lamps that are new yet already exist in memory. For the cultural association Padiglione Italia she thinks about the theme of migration, so her Motus, with its two rear legs and top, represents tradition and roots, but at the same time the unusual front wheel indicates the constant instability and necessity of movement of the human race. The final result is a hybrid, halfway between an end table

and a wheelbarrow, that in spite of its refined workmanship reminds us of the spontaneous design of those who live and work in the street. Creativity pervades her, and she makes small series or one-offs, furniture and paintings, illustrations and objects. But her value should not be sought in the specific subject, not in the individual item, though it contains the whole, but in the overall constellation, because as Prince De Curtis teaches us: "It is the sum that makes the total." ■
Virginio Briatore